



2782 Sheffield Crescent

Stunning Rancher...

Stunning Rancher built in 2021, located in Crown Isle's Cambridge Park Estates, ideally positioned on the 13th fairway w/ a northern exposure. Sophisticated luxury, clean lines & contemporary styling, open concept plan w/ spacious room sizes, 9' ceilings throughout & 10' ceilings in the entry & great rooms, 2,084 sf, 3 BD/ 2 BA. Fine finishing & contemporary hues, linear gas fireplace, engineered wide plank hardwood flooring, quartz counters, crown molding. This dream kitchen boasts a large quartz island, window over the sink & hidden walk-in butler's pantry. French doors from the Great room open to the covered patio, ideal for BBQ's & four-season enjoyment. The master suite offers a large walk-in closet & 5 pce ensuite, dual vanities, W/C, air-jetted tub, & fully tiled curbless glass shower. Crawl space 6'4" in center w/ stair access. H/W on demand w/ recirc., Carrier Air Purifier System, Heat Pump, 3 car garage w/ Polyaspartic flooring. Low maintenance yard, gorgeous gardens.

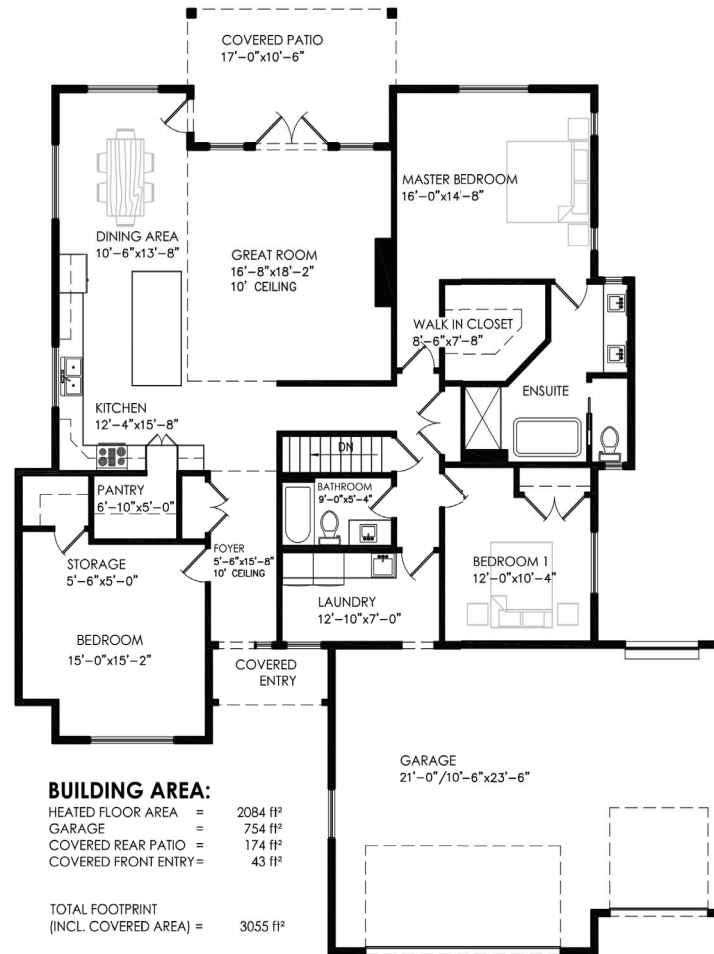


2782 Sheffield Crescent
Listed at \$1,425,000
3 Bd | 2 Ba
2,084 Sq Ft



MLS #: 1008426
Lot Size: 0.20 Acres
Year Built: 2021
Zoning: CD-1H

2782 SHEFFIELD CRESCENT



Visit our website for all Comox Valley listings, neighbourhood guides,
and resources for buyers & sellers!

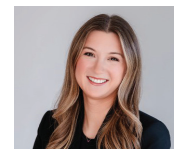
www.janedenham.com



Jane Denham
PERSONAL REAL ESTATE CORPORATION
250.898.1220
jane@janedenham.com



Grace Denham-Clare
REAL ESTATE AGENT
250.897.8890
grace@janedenham.com



Marnie Denham-Clare
REAL ESTATE AGENT
250.218.4563
marnie@janedenham.com



282 Anderton Road
Comox, BC V9M 1Y2
o. 250.339.2021

